



Durundur **Bulletin** *Railway*

*Australian Narrow Gauge Railway Museum Society,
trading as the Woodford Railway, is located
25 km west of Caboolture in Woodford, Queensland*

Volume 36

Number 332

March/April 2015



Mark Gough, removing fire box bricks from the Perry as the ex-Dreamworld loco gets a work over, 10 Jan 2015. Bob Gough Photographer.

Running Days: First and Third Sundays

Trackwork Saturdays: 14 March, 18 April, 16 May & 20 June 2015

Work Days: Every Saturday; Perry 2nd Sunday

Our Safety Goal - No Injuries

ANGRMS: Margaret Street, Woodford (PO Box 1135, Woodford Qld 4514); ISSN 0158-785x, ABN 92 009 872 011, ACN 009 872 011



Terry Olsson	President, Operations, Sales and Marketing	m: 0429100911 terryolsson1@hotmail.com
Noel Haynes	Vice President, Safety and Training	m: 0417195507 mcallwork@hotmail.com
Bob Gough	Vice President	(07) 3848 3769 (7 pm - 9 pm only) bundybob003@bigpond.com
Ian Thompson	Secretary	(07) 3848 5611 ianthompson359@gmail.com
Steve Baker	Treasurer	m: 0428572495
Greg Stephenson	Track Day Coordinator	(07) 3844 9269 or m: 0423417326 greg.stephenson@uqconnect.net
Neil Trevorrow	Roster Clerk	(07) 3263 6761 or m: 0402051546 trevorrow26@optusnet.com.au
Brian Webber	Special Running Days, Group Bookings	(07) 3354 2140 bwebber5@bigpond.com
Lynn Zelmer	Webmaster, DRB Editor	lynn@zelmeroz.com
	ANGRMS web site	www.angrms.org.au
Woodford	Station Master's Office	(07) 5496 1976

Scheduled Activities

General Meetings: 2015: 20 Feb, 17 Apr, 19 Jun, 21 Aug, 16 Oct, and 11 Dec at 7:30 pm, entry from 7:00 pm; combined with LRRSA at the refurbished BCC Library, 107 Orange Grove Road, Coopers Plains, a 10 minute walk from Coopers Plains Railway Station or a phone call to Dan Sheehan or Bob Gough for transport to the new venue. A bus stop is at the front of the shopping centre and Express buses run services from the stop. [ANGRMS/LRRSA/AMRA NG group at AMRA, Zillmere, 10 April 2015.]

Light Duties Work Day: Normally 3rd Wednesday of the month. Contact Neil Trevorrow m:0402051546 if planning to attend.

Donations and Bequests

Donations to the Society's Museum Fund are tax deductible. Please make cheques payable to the 'Australian Narrow Gauge Railway Museum Society' and mail to the PO Box above or deliver in person. Remember to include a note indicating that it's a donation, plus your name and address so that a receipt can be posted to you. We appreciate your help and support now, but also consider mentioning the Society in your Will. Donations/bequests can be for a particular project or for museum development (restoration or infrastructure). For details, contact the President

President's Report

Terry Olsson, President

All members are reminded that the 2015 AGM will be held at our Woodford site on Sunday 29 March commencing at 11am. You are also reminded to let Ian Thompson know if you intend to stay for the BBQ afterwards (or bring your own).

One thing which will be discussed on this day, and which the Management Committee would value member's thoughts on, is a possible rise in our public running day fares. There has been no rise for at least 5 years despite our costs rising significantly during his time.



Work continues on our new Perry steam loco. Unfortunately the news has not been all good with additional work being found to be required before the loco can return to service. The trailing truck has been found to be in worse condition than originally thought, with unacceptable play in the axlebox guides and the wheel needs turning. When running chimney first as occurred at Dreamworld, it was not a problem. However when running in reverse, as we will need to do, work is required to make it safe for us to use. We also found some leaking boiler stays hidden behind the fire bricks in the firebox when we removed these bricks as part of the conversion back to coal/wood firing. At the time of writing we are waiting for these

to be inspected by our boiler inspector.

Unfortunately this additional work means return to service of this loco may be delayed. If you can help with this work please let Mark or one of the Board members know – the more help we get the quicker it will return to service.

If you have not already done so, members are reminded that your 2015 membership renewal is now due.

Photo above: Ex-Dreamworld fitter and foreman, Ian Lindsay, and Terry Olsson inspect work on Perry. Jill Gough photographer.

Remember – safety first!

Safety and Training Report

Noel Haynes and Dave Caruzzo

Safety is a very important part of our operation and ANGRMS remains committed to providing a safe railway.

As part of the Queensland Transport (Rail Safety) co-regulatory type approach, they have commenced regular “non audit” visits where we can discuss any issues we are having, as well as discuss and provide us with guidance material on different aspects of the Rail Safety Act. As well as allowing members of the Queensland Transport rail safety team to visit our railway and understand our particular operation, they will also be of considerable assistance to us

We had the first of these for 2015 on the 17th March when issues such as internal auditing, the Risk Register and any corrective actions were discussed. The next visit will be in April.

While they are already qualified diesel drivers, Sam Erb and Steve Baker recently passed the training required to drive Netherdale. Each locomotive we own is slightly different so it is important that drivers and fireman are trained on the special requirements for each one. Congratulations to Sam and Steve.

Some Civil Notes

Greg Stephenson, Track Day Coordinator

Track Maintenance Work

December 2014 and January 2015 were noted for extreme hot weather with frequent rain. Combined with Christmas and holidays, there has been little progress on track activities over that period. However, we did manage to install two concrete sleepers in the main line on one very hot Saturday before retreating to activities in more shaded area.

The heat and rain has lead to flourishing weed and grass growth, so considerable time has been spent on “vegetation control” - grass mowing and poisoning the track.

Our plans are to continue our sleeper renewals in concrete or steel as part of our regular maintenance. The monthly track work parties will generally be held on the Saturday before the second running day of the month and are planned for Saturday 14 March, 18 April, 16 May and 20 June 2015.

Peterson Road

The constant demand for mowing and poisoning has diverted the track gang from track building activities. If any members would like to contribute to the

work at Peterson Road but are not up to track work, you might consider assisting with mowing so the track gang can concentrate on the new track construction.

Whilst the wet weather has delayed most activities in the open, it has been an opportunity to prepare and match fish plates with compatible track bolts in preparation for assembling more panels of track. An additional two panel of track with 60lb/yd rail and concrete sleepers have been fish-plated into position on the future mainline. These panels came complete from Ingham, however a number of cracked sleepers and rusted connections were replaced to ensure their long life.

Whilst the ex-QR steel sleepers to be used in the point work had been cut to size for some time, there has been a few hold-up in sourcing appropriately skilled people with time available to weld them together. We now have enough sleepers to commence one set of points and welding on the second set is well advanced.

As well as more members for the track gang, we are still keen to hear from any of our drivers that would like to assist and diversify their driving experience on Saturdays.

Operations, Sales And Marketing

Terry Olsson, Operations, Sales and Marketing

During January and February passenger numbers were considerably down on the same time last year. The very hot weather certainly did not help.

It is important that all members promote our railway where ever and whenever they can.

Members are reminded that most of the money we use for projects, etc., comes from sales. Help is needed for the upcoming shows, particularly the AMRA show which is our largest for the year.

During January Rod Sheehan, who is a national chainsaw art champion, moved into Norm's old house part way along our railway. Except when he is away at shows, etc., Rod has been providing demonstrations of his chainsaw art for our train passengers. This has been well received and is a great addition to our railways attractions. A big thank you to Rod.

We continue to have a shortage of volunteers for our public running days so if you can help please let myself or Neil Trevorrow know.

As expected, sales of our new book "Salute to the Hudswells" have slowed after the initial and pre-Christmas rushes. The book is however continuing to sell well, particularly overseas. While we have sold more than enough to get

our money back, several large overseas orders are still to be paid for. We are very close though ... An excellent effort by everyone involved.

If all goes to plan, we will have another new book to release at the AMRA show. At the time of writing well know author Brian Webber was putting the finishing touches on his new book on Queensland Railway's lines beyond Toowoomba.

Date Claimers

AMRA Show 2015 – 9 and 10 May 2015: Our biggest show for the year, the annual AMRA show will be held on the second weekend in May this year. This means it will not clash with our normal running day for a change. It will be returning to the Exhibition grounds but in a new location – the show bag marquee in the hospital corner of the grounds. This show is our major marketing and sales event for the year so please block out the dates in your diaries and come along to help. The more helpers the easier it is for everyone. As well as the Saturday and Sunday, remember assistance is also required on the Friday to set up.

Toowoomba Model Trains, Craft and Hobby Expo – 30 and 31 May 2015: Only two weeks after the AMRA show, this show is also an important marketing and sales opportunity for our railway so your help and assistance is also required. As well as the Saturday and Sunday, we will be setting up on the Friday. This year this show does not clash with our normal running days so please block out these dates in your diary.

Saturday 13 June 2015 – Special Running Day, Anglican Church Open Day: The Woodford and Kilcoy Anglican Church will be holding another of their open days at our site. Based on the success of last year we will need several additional helpers as well as a train crew.

Pine Rivers Model Train and Hobby Show – 22 and 23 August 2015: While it is still a fair way off, please also mark these dates in your diary as help will be required for this show.

Monthly Statistics

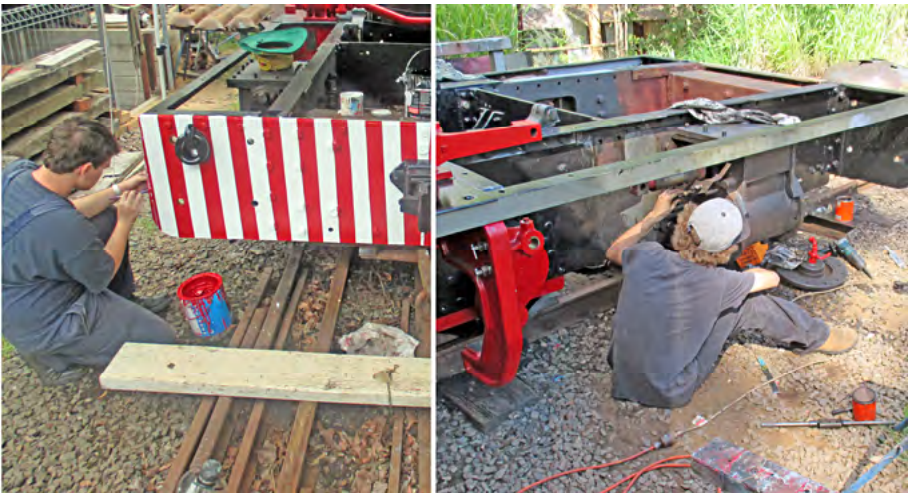
	January 2015	February 2015
Paying Passengers	108	99
Guards Sheet	128	144

Sales Items

No new sales items have been released.



Removal of the Perry trailing bogie, 8 February 2015. Left to Right: Peter Gough, Terry Olsson, Bob Gough and Mark Gough. Jill Gough photographer.



New members: Aaron (left) putting in the final touches on the lines on Melbourne's head-stock; and Curtis tapping the 3/4 holes and cleaning the bore ahead of the honing process. Ryan Silk photographer.

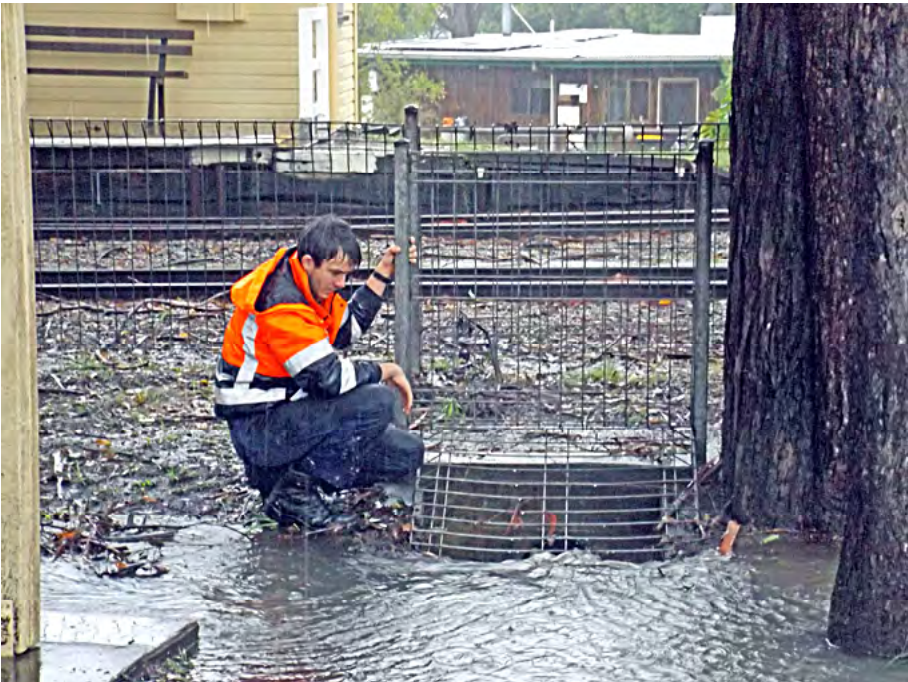
Cyclone Marcia

Over the weekend of 21st and 22nd February 2015, Woodford was subject to heavy rain resulting from Cyclone Marcia that crossed the Queensland Coast north of Yeppoon on 20 February 2015.

The 24 hour rainfall (to 9am) at Woodford on Friday was about 130mm and on Saturday 155mm, resulting in moderate flooding in the Stanley River and closing the D'aguilar Highway beyond Woodford.

Ryan Silk and Greg Stephenson were on site from approximately 8.30am to 11.30am on Saturday 21 February 2015.

- The drainage at the Margaret Street area appeared to work effectively.
- Attention will need to be given to the table drains beside the track.
- Some drainage issues at Peterson Road will need to be addressed as part of the Storybrook Station works.



Ryan clearing the inlet pipe at the picnic area, 21 February 2015. Other photos taken at the same time indicate extensive flooding and standing water beside the track. Greg Stephenson photographer.