

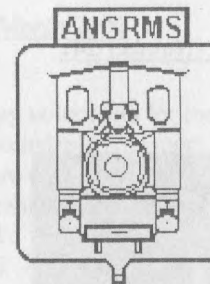


DURUNDUR

RAILWAY

BULLETIN

Newsletter of ...



The Australian Narrow Gauge Railway Museum Society

A.C.N.
ISSN
Editor

009 872 011
0158-785x
Ken McHugh

Postal Address:
P.O. Box 270
Albert Street
BRISBANE 4002

Volume 21

Number 241

March 2000





PRESIDENTS REPORT - by David Mewes

The Society's Annual General Meeting was held on Wednesday, 1st March.

The following candidates came to office on the Board of Directors for the year 2000:

PRESIDENT:	David James MEWES
VICE PRESIDENTS	Tony Alexander LINDSAY Paul Andrew ROLLASON
SECRETARY	Robert George GOUGH
TREASURER	Stephen Harold BAKER
BOARD MEMBERS	Leslie James BEAHAN Shane Patrick YORE

A welcome is extended to the new Board members, Shane Yore and Bob Gough. This will be the first time Shane Yore has served on the Board and Bob Gough returns after two years absence.

Thanks to the two retiring Board members, David Thornton and Laurie Erb. Both David and Laurie contributed much to the activities of the Board. Laurie, as Society Secretary carried out his duties in a very competent and businesslike manner that has been very much appreciated.

Our project was shown on the Great SouthEast (Channel 7) on Sunday, 5th March. It was quite a good segment and already we have had a number of enquires from the public.

Queensland Transport conducted their annual audit on our safety management system as part of our Rail Safety Accreditation. Friday, 3rd March the auditor undertook the desk audit at my home and then, on Sunday, 5th March the operational audit was conducted. The auditor found that, other than a couple of minor points, the Society was complying with its safety management system and its Rail Safety Accreditation license. The Society was commended for its commitment to rail safety and, considering we are all volunteers, its professional approach. One thing that we will need to do in the next 12 months is review our Operations Manual to ensure it is current and that we are complying with all the requirements.

I would like to thank all the Society members and our operating day volunteers for their assistance and commitment to our safety management system. Queensland Transport was particularly pleased with our training program. We must ensure that all our operational staff are accredited for their respective positions by attending the necessary training courses for each position.

We were pleased to have been able to host some guests from Indonesia (see cover photo), Queensland Transport and Queensland Rail on Sunday, 5th March, to coincide with the visit by Queensland Transport's auditor.

The 6-member Indonesian delegation has been visiting Queensland to study the rail accreditation system with Queensland Rail and Queensland Transport. Society members acted as guides around our site. The Indonesian delegates were interested in the audit process as applied to a heritage railway and our members answered many questions.

Some of the visitors were busy taking photos and videos of our activities whilst others were busy taking copious notes. The Society hosted a morning tea for the visitors and this was well received. The visitors were keen to learn more about our Society and its locomotives and were pleased to be given the Society's web page address, which they could access in Indonesia. Thanks to all our members who were either on roster or came along to act as hosts for our guests, you have helped promote the Society in no small way.

Unfortunately, the Society missed out on acquiring "Stella" from the Goulburn City Council. This is a major disappointment as this locomotive would have represented the Krauss type in our museum. It is also a sad loss to the history of Queensland's sugar industry.

There is a constant need to maintain the grounds and gardens around the site. Simple tasks such as mowing and gardening are constantly needed. If you would like to find out how you can help then please do not hesitate to contact me.

MONTHLY MEETINGS

Our March monthly meeting was our Annual General Meeting held on Wednesday, 1st March. Following the AGM, Bob Gough showed a few slides of cane tramways in the Mackay district from the camera of Mark Gough.

BOOKINGS/ENQUIRES

All members, particularly those on running day rosters are reminded that they should refer all enquires for special running days or bookings to **George McHugh on 3265 6834**. This includes any requests for wedding photos or other occasions. Take the name of the person wanting such a booking and their requirements (if known) and a contact phone number and **then pass the information onto George**.

We had a case recently when a wedding party turned up expecting to have their wedding photos taken on site, but those present knew nothing about it. Result – Society did not receive any payment.

David Mewes
PRESIDENT

SAFETY & TRAINING REPORT - By Paul Rollason

The past twelve months has seen ANGRMS take a new approach to safety and training. I am pleased to say that members have come to the challenge and all that have participated so far have done so with enthusiasm.

In the second half of 1999 the S&T Committee implemented its Safety and Training Package which consists of Basic Safety Training and Role Specific modules. These modules consist of easy going training seminars followed by a simple, short examination. It is pleasing to see that more than two-thirds of our current operational staff have completed their theoretical component and now practical assessments will occur when individuals appear on the roster. I congratulate these members for their achievements and a full list of those members who have completed various modules is included in this DRB. The Committee will need to catch up with the remaining third of our operational staff over the next two months. If you haven't done the theoretical component of the course as of yet, would you please contact myself at (H) 3278 9110 or (W) 3870 1300 or David Mewes.

You will need to become accredited **before 30 April 2000** if you wish to continue on the roster and we really need your help on the roster as it is hard to fill. The commitment is not that large and you will not have to be re-accredited for another 3 -4 years.

For those not on the roster but do assist on site, all you are required to do at this stage is a Basic Safety Training module which just includes general safety rules and is more of an awareness course.

It was also pleasing to have a fantastic turn up to the emergency training exercise which we had on site in November (See cover of January 2000 DRB). All participants got into the spirit and some were even "dressed" up with some realistic injuries. An enjoyable afternoon was had by all those who participated. It seems the only person that was a 'hopeless' case was our president, David Mewes. The rescue team walked away from David despite his cries for help!

During this year we will also be developing other modules for members to take part in, in other roles. These modules / roles include Shunter, Track Gang safety and Diesel accreditation.

I am satisfied, as is Queensland Transport's Rail Safety Unit, that we are heading in the right direction with the training of our members. We all have to remember that if we are going to have a safe operational environment then we all need to take an active role in training and reassessment. Don't see it as a chore but as an obligation to yourself and the safety of others.

Remember, by participating you are continuing your own education and you may learn something new. All you have to do is demonstrate this and be assessed, it's that easy.

I look forward to working with all our staff in 2000. Keep up the good work.

Paul Rollason
SAFETY & TRAINING MANAGER





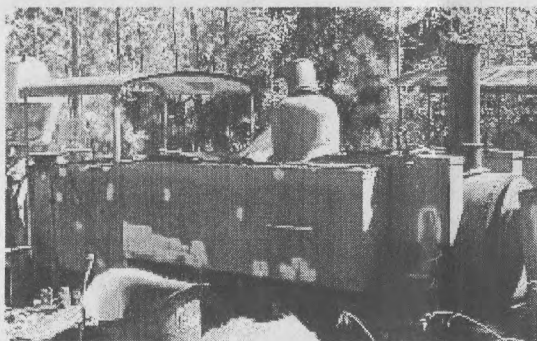
OUR COLLECTION - By Ken McHugh

Success! I am pleased to be able to present a photograph of Alison in time for this edition of DRB. Member Rob Deskins approached me at our AGM earlier this Month and made me aware of photos that existed of Alison at the Local Studies Library, Southport, Gold Coast. Many thanks to Rob for this lead. Thanks must also go to Pat Fischer from the Library for taking the time to research and scan the particular photograph. In addition, Pat located another photo of our Alison standing near Kathleen, Neranwood Hardwood's other locomotive.

FACTS

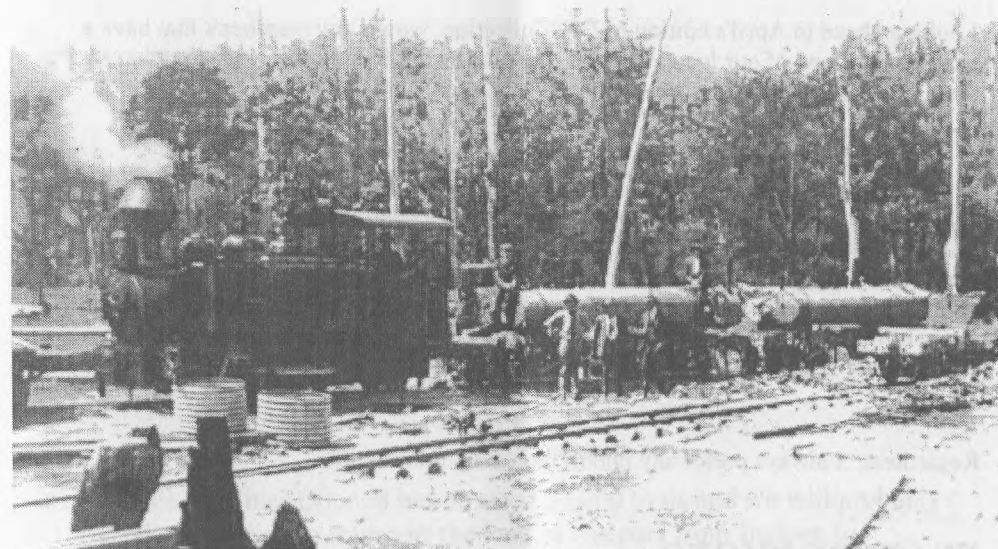
Name	Alison	Wheel Arrangement	0-6-2t
Built By	John Fowler & Co Leeds	Weight	16 tonnes
Build #	16194	Horse Power	
Year	1923	Cylinders	2 @ 10" x 14"
Drive Wheels	28"	B.P.	160psi

BACKGROUND



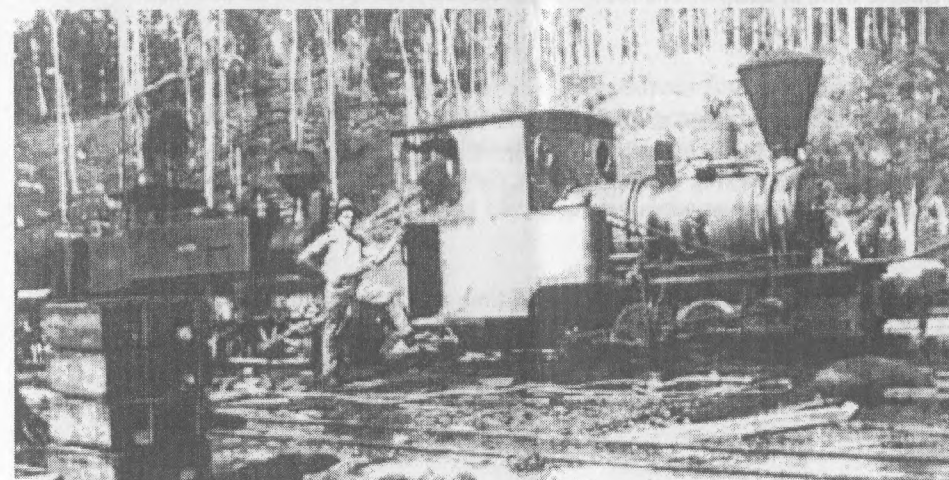
transported to Brisbane for storage in 1974 and then to Woodford in 1980.

It is also understood Alison earned the nickname of "Killer" during her career.



(Above) This photograph shows "Alison" shunting a load of timber on the Neranwood Hardwood Company's tramline at Mudgeeraba.

(Below) This photograph depicts both locomotives used by the Neranwood Hardwood Co. "Alison" is in the background and "Kathleen" an Orenstein and Köppel 0-6-0T. These two photographs would have to had been taken some time between 1924 when "Alison" was purchased and 1926 when the Neranwood Company closed its operations.



Looking ahead to April's edition of Our Collection, would any member/s that have a past photo of one of our loco's please make contact with me. I can arrange to have your photo scanned and returned to you.

A note on Photo quality: - I'm still developing skills in Photo Enhancement, but where I have to scan an existing photograph into the computer, the quality is will be less than that of a photograph I take with my digital camera. When scanning an old photograph I am unable to enhance it and the quality is in the hands of the original photographer. For example the cover photo is one I took using a digital camera, the photo of the Bauple is a scanned from the original. In my opinion the cover photo is considerably sharper.

Regardless, I always prefer any photograph than none at all!

FEATURE PHOTO

(Centre Spread) The Third photo from the Sewell Collection is another exciting one as it shows ex Queensland Railway's B12 Class 2-6-0 No.30 BAUPLE collecting cane wagons at Gunalda on the North Coast Line. The loco belonged to the Bauple Mill and operated over a private branch from Gundiah, on the North Coast Line to the Bauple Mill, at Bauple. The loco was purchased from QR in 1926 and was scrapped in 1951.

It was named BAUPLE during its ownership with the Bauple Mill and also continued to carry its old QR number. The Bauple Mill closed at the end of the 1950 season. The driver carrying the oilcan in the photo is Thomas William Sewell. It is understood this photo was taken between 1945 and 1950.

Many thanks to David Mewes for taking the time to research and provide notes for each photograph from the Sewell collection over the last two issues of DRB.

STOP PRESS

- Queensland University of Technology has donated a milling machine and a petrol-driven generator to our Society. We have until the end of March to move them.
- CSR (Herbert River) have donated second-hand concrete sleepers to us plus dogspikes and rail clips.
- Caboolture Shire Council has donated \$2,000 to us and we will probably use that donation to transport the load of sleepers from Ingham to Woodford.
- Any member wishing to physically assist with the removal of the sleepers from DreamWorld, and/or if you have a suggestion on how we can economically transport the Ingham sleepers to Woodford, please contact David Mewes.

The concrete sleepers are long term useful resources for our project. They are rare to find in the size we need them, and even rarer to be available. The sleepers from Ingham together with those from Dreamworld (see February's DRB) will allow us to extend our track network

Ken McHugh
EDITOR

INFORMATION

Monthly Member Meetings 8pm, 1st Wednesday of every Month
Scouting Association of Australia
32 Dixon Street, AUCHENFLOWER

Woodford Margaret Street, Woodford, Queensland

Trackwork Parties..... 2nd Saturday of Each Month
General Work Parties..... Held every Saturday
Running Days..... Every Sunday 10 - 4pm

Key Contacts

David Mewes	President & meetings	3273 2014 or mewesdj@powerup.com.au
Ken McHugh	DRB Editor / Webmaster	3269 5521 or kensuzy@bytesite.com.au
Paul Rollason	Safety and Training	3278 9110
Greg Stephenson	Track Workdays	3844 9269
George McHugh	Roster Clerk & Special Running Days Coordinator	3265 6834
Woodford	Phone in SM's Office	07 5496 1976

Internet Number of times our Internet homepage was visited in
December 1999 - 252 February 2000 - 426
January 2000 - 351

Key Dates AMRA Show April 29th 30th & May 1st

March Recommended Site is www.railpage.org.au/statemine

The City of Greater Lithgow Mining Museum Inc was incorporated in October 1990 to develop a mining museum at the site of the former **Lithgow State Mine**. Initial plans included the use of former mine buildings to house visitor facilities & mining exhibits with outdoor areas being adapted for railway, industrial and cultural displays.

COVER PHOTO - Indonesian Delegation visiting our site on 5th March 2000.
Photo -K McHugh