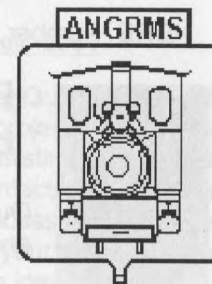


DURUNDUR
RAILWAY
BULLETIN



Newsletter of

The Australian Narrow Gauge Railway Museum Society

A B N 92 009 872 011

A C N 009 872 011

ISSN 0158-785x

Editor

Ken McHugh

P.O.Box 1135

Woodford QLD 4514

Volume 22

Number 259

Nov / Dec 2001



*Wishing you and your friends and family a very
happy festive Season, from all of us at A N. G. R. M. S.*



PRESIDENTS REPORT by David Mewes

Our track gang continues to work solidly replacing sleepers and other tasks around the site.

Now that summer is here we need volunteers to help mow the grass on the site. The job is not hard, especially if the area is mowed regularly, but is time consuming. Last year our track gang spent a lot of its time in doing the mowing thus diverting this dedicated band of volunteers from more essential tasks. Can you help in this area? If you can donate some of your time to helping mow the site, it can even be done on a weekday and should preferably not be done on a Sunday. If you give me a call, I can tell you the area that needs mowing the most. We certainly don't expect the whole site to be mowed by one person in one day. For further information contact me.

Recently, Queensland Transport undertook our annual safety audit. Whilst we passed this year there are still a few issues which we need to deal with. The Board will be discussing these at its next meeting. I would like to congratulate all those associated with the Society's safety program for assisting us to reach this goal and more importantly, to everyone on site for taking a professional approach to our operations which results in safer operations.

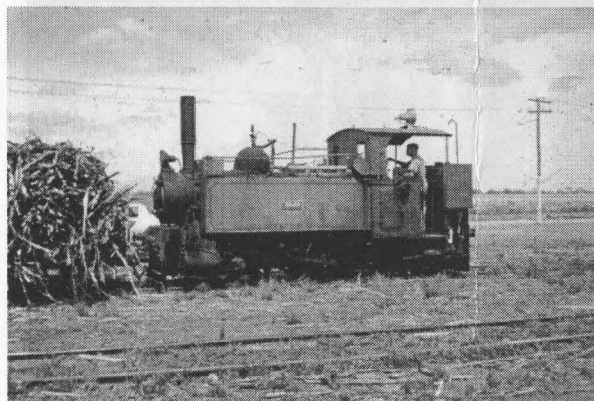


Photo from the Rob Deskins Collection

No, this isn't Kilre at Box Flat, however the Christmas Party held at the Queensland Pioneer Steam Railway's site at Box Flat on Saturday, 24th November 2001, was very successful. More than a dozen ANGRMS members and their families attended. QPSR had "Kilrie" in steam, following an overhaul, especially for us. Altogether it was a most enjoyable day.

FUND RAISING: Following the suggestion of a Central Queensland member we want to embark on a major fund-raising appeal/project. If any member would like to assist the Society by co-ordinating or assisting in co-ordinating this major and very essential project then please contact me. Fundraising has many forms and getting together to specifically discuss and plan the next steps as my full support. This is a good way to help your Society if you are not already able to assist us. Thank you for putting this idea forward.

SAFETY ISSUES: Each month we are required to submit an incident summary to the Rail Safety Accreditation unit of Queensland Transport.

To assist in compiling this very necessary data, and as part of our own Safety Management System (SMS), we have a Daily Log Sheet which is to be completed for **every** running day. Whilst this is being done, the Log Sheet is not always being completed fully or correctly. The **Station Master** on the day is to ensure the correct completion of the required sections. The Station Master should seek out those required to complete sections on the Log Sheet where required and have those people sign off on their relevant areas even if that person has no relevant comment to make. The Station Master is also to ensure he shows the correct **Date** at the top of the page.

MEMBERSHIP RENEWAL: With this issue of DRB you will receive your Notice of Renewal for your membership subscription. The Society's Financial Year operates from the 1st January to the 31st December each year.

The annual membership subscription for our 2002 Financial Year stands at \$30.00 for Adult Members, \$20.00 for Concessional Members and \$15.00 for Junior Membership. Honorary Life Members and those who paid for Financial Life Membership are not required to pay any membership subscription.

You will also be receiving shortly a notice asking for nominations for the Board of Directors for 2002. Please consider the requirements of each position carefully, as they all carry a considerable level of responsibility, not only to the Society membership and the Society as a whole, but also there are also legal requirements as well. I encourage you to consider nominating for the Board.

David Mewes
President

FINASUCRE and Things.....

By Ray Ellis

President David's very interesting notes on this company got my mind clicking that I had recently seen some references to their Belgian Congo operation, and so toddled off to the bookshelf to see what I could find.

For those interested in this area, there are three volumes titled *Le Rail au Congo Belge* (2 vols so far published) by G. Blanchart, et al, which cover all the public railways, but remember that the Congo was the place where they had many 2ft and 2ft 6ins gauge lines, Garratts and all! Also of interest is Reg Carter's *Railways of the Congo* book which is basically loco lists for all public/private lines. Here is a summary of what I found.

The company was originally known as *Compagnie Sucriere Congolaise*, and their cane sugar mill (factory, as they call it) was served by a 600mm gauge system that was located at Moerbeke-Kwilu, 176 kms from Matadi on the 2ft gauge *Chemin du Fer du Congo* main line to Leopoldville.

Have a look at a map and you'll see that this line follows the mighty Congo River, and was built (like many original Congo lines) to avoid rapids in the river; many African rivers are navigable for quite long distances - wood burning paddlers and all! The CFC was eventually converted to 3ft 6ins gauge to bring it into line with other Congo lines in the 1920-1930s. The Kwilu River was a feeder of the Congo, running south, over which the CFC had a large bridge. Blanchart's books has maps showing all this.

Carter gives a loco list:

No 1	0-6-0T	La Meuse 3265/1927
Nos 2-6	0-6-0T	La Meuse 3266-3270/1928
Nos 1-2 (2nd)	0-6-0T	La Meuse 3274-3275/1928
Nos ?	0-10-0T	Tubize 2419-2420/1950

No ?	B	Whitcombe 40336/1946
No ?	C	Brookville 4504/1959
No ?	C	Brookville 4602/1961
No ?	C	Brookville 4711/1961
No ?	C	Brookville 4808/1962
Nos ?	C	Brookville 5209-5210/1967
Nos ?	B+B	Hunslet 7066-7067/1972

Of these Nos. 1-6 were 14 ton, 2nd Nos. 1-2 were 9.5 ton but the 0-10-0Ts don't have a weight. I would suggest the ten-coupled loco probably had some form of side play for first/last axles, maybe like the Indonesian locos of similar design. They were all wood burners apparently, quite normal for the Congo, even on the main line railways! Very spectacular at night, but plays havoc with the clothing if you get 'cindered on'!! Would suspect all the steamers now gone, but the first loco in 1927 probably gives a start date for the mill, at which time the CFC was in the throes of converting to 3ft 6ins gauge.

Carter has a works photo of one of the La Meuse 0-6-0Ts. The rest of the locos are diesels, the Whitcomb probably like the USATC locos, the Brookvilles one of their 'standard' designs. Interesting to see they took a 'back flip' and went British with the Hunslets in 1972.

I am unfortunately not aware whether this mill tramway is still in operation. Hope this might be of interest to fellow DRB readers.

Ray Ellis
Member

SUGAR CANE NEWS

By Lynn Zelmer

I have spent several days in Mackay and Proserpine recently demonstrating Microsoft's Train Simulator software in an attempt to see if it would be suitable for cane loco driver training purposes. The results were apparently very encouraging I understand that a project will likely result in the New Year. If successful, a cane railway simulator would have potential as an attraction for Durundur Railway visitors.

CQ Combined Rail Groups Meeting, 11 Nov 2001 The latest meeting was at the Archer Park Tram/Rail Museum and was attended by representatives of roughly 9 rail oriented groups from Rockhampton, Gladstone, Mt Morgan and Emu Park (including Rocky reps from AHRS and ANGRMS).

Each group gave a brief update on their operations and future activities, followed by discussion of promotional and educational activities. Henry Schueber (Chief Executive's Representative for Rocky) explained his role within QR and John Browning showed a number of delightful slides on 2' gauge railways (primarily locomotives) from his 2001 travels in the UK and France.

Lynn Zelmer
Member

NEW BOOK AVAILABLE

John Kerr

"Romance of the rail: history in art and word", by local artist Janet Skinner and author Pauline Reckentin was successfully launched by retired QR CEO Mr Vince O'Rourke in November. The books are now available from the Railway Shop South Brisbane and the Royal Historical Society in William Street, City. Societies will be approached in the near future and may wish to carry it in their sales stock.

If someone would like a book ASAP and can't make it to one of the outlets above, send \$30 (\$25 plus \$5 towards postage) to John Kerr, 105 Highland Tce, St Lucia 4067.



EDITORS DESK

By Ken McHugh

I received an email in November from a couple that had visited Woodford earlier this year. See their email below.

This is Chris Griffin from Blackpool, England. We came to Oz in Jan this year & visited your railway (I'm the one if you remember that you kindly opened the workshop for to see Melbourne as I drive a miniature diesel on Blackpool Pleasure Beach which was also built by Hudswell Clarke of Leeds)

I have just bought a computer & found your site on the net, so I thought I would drop you a line & thank you once again for the friendliness & helpfulness of all the staff at your railway. We are planning to visit Oz again early in 2004 I hope that we shall find time to visit you again as we enjoyed our last visit to your railway no end.

I have recently joined a new society called the Ribble Valley Steam Railway at Preston (16 miles away) if I have got the hang of this computer there should be a photo of me from our website taken yesterday watching someone else working while we were laying track in our new workshop/engine & ngine & carriage 14XWe have about 1.5 Miles of track & hope to be running for the public in August next year. Well keep up the good work & we hope to see you again in the near future.

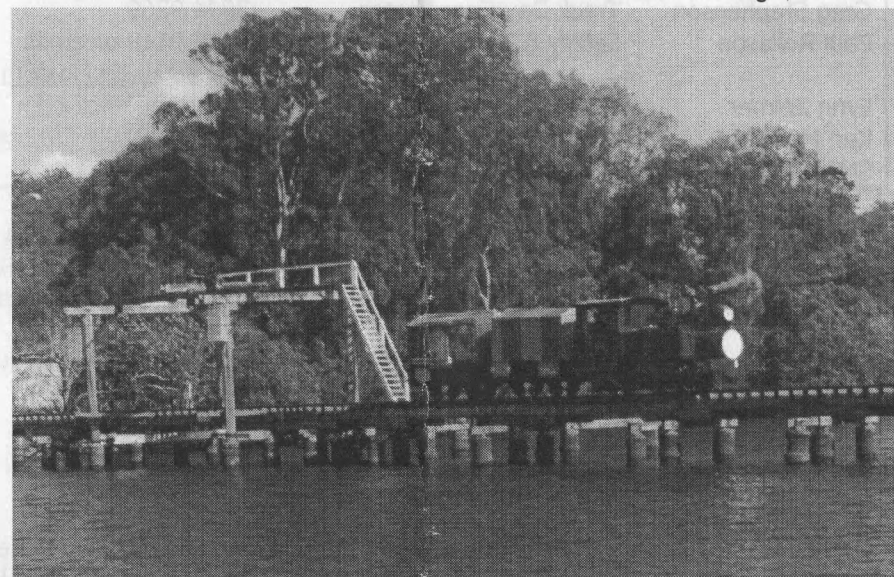
Chris & Maggie Griffin.

Congratulations to all members who have provided that extra service during the year, customers like Chris and Maggie were encouraged to drop a line even 10 months after visiting, they must be impressed.

Thank you to everyone who has contributed to the DRB this year. To keep those members not on the Internet informed, I send out an email request to members who have the Internet asking for any stories, usually around the 10th of the month. Then within a few days I receive an article or two. In fact, I rarely receive written letters anymore, it all comes via email. I'd also like to thank members who have contributed photographs for use in the DRB. A picture can add so much to a story and quite often I receive the story from one person and the photo from another.

Next Year - My goal next year is to work out how to bring regular colour to the DRB but I don't know how just yet. Also, I need to discuss with the Board timing issues with the newsletter. It takes all day Saturday and all day Sunday once a month to produce, print, fold and post 150 DRB's. So any ideas you may have that will enhance the DRB for everyone including a bi monthly edition, let me know. Merry Christmas everyone!

Ken McHugh, Editor



BFC5 playing at the Lift Bridge 8/2000, Maroochy River, Bob Gough

RESOURCE PAGE**Monthly Meetings**

8pm, 1st Wednesday of every month
BCC Indooroopilly Library meeting room

Woodford Address

Margaret Street, Woodford, Qld

Website Address

www.angrms.org.au

Track Work Parties

2nd Saturday of each month

General Work Parties

Every Saturday

Running Days

Every Sunday 10am 4pm

NAME	ROLE	NUMBER
David Mewes	President	3273 2014 or email mewesdj@powerup.com.au
Bob Gough	A/Secretary	3848 3769 mjcq@bigpond.com.au
Steve Baker	Treasurer	3857 2495
Shane Yore	Operations Manager	3888 1307
Martin Wiltshire	Roster Clerk	5496 3455
Greg Stephenson	Track Day Coordinator	3844 9269
Paul Rollason	Safety & Training Manager	3278 9110 or email serpar@bigpond.com
Lynn Zelmer	Webmaster	lynn@zelmeroz.com
Ken McHugh	DRB Editor	kensuzy@bytesite.com.au
SM's Office	At Woodford	5496 1976

Key Dates

- 27 Dec 1st Jan - Woodford Folk Festival Roster
Can you assist on the Roster
this year? Call Martin (above)
- 1 January 2002 - Membership renewal due
- 1 February 2002 - Nominations close
- 6 March 2002 - AGM

Cover Photo

MKD14 EMB 0-6-0DH on the bulk raw sugar train derailed in
Halifax, 23/9/2001 (Macknade Mill) Photo by Chris Hart